

UT61E Interface Software Manual

➤ System Requirements(UT61E)

To use **UT61E Interface Program**, you need the following hardware and software:

- ✚ An IBM PC or equivalent computer with 80586 or higher processor and 600 x 800 pixel or better monitor.
- ✚ Microsoft Windows 95 or above.
- ✚ At least 128MB of RAM.
- ✚ Can access to a local or a network CD-ROM.
- ✚ A free serial port RS-232 and a usb port.
- ✚ A mouse or other pointing device supported by Windows.

➤ Hardware install:

- ✚ If what to use is multimeter the RS-232s provide with the form connect a people's line, the RS-232 pick up a people line of red unauthorized biography lose the line to receive to carry to insert multimeter fix in the slot with a back of the form protection, then go on-line of another on carry with computer of string a right conjunction is then.
- ✚ If what to use is multimeter the USB provide with the form connect a people's line, the USB pick up a people line of red unauthorized biography lose the line to receive to carry to insert multimeter fix in the slot with a back of the form protection, then go on-line of another on carry with computer of string a right conjunction is then.

➤ Installing UT61E Interface Program

To install **UT61C Interface Program**, please follow below procedure:

Before install the interface program, make sure that the computer is running the Window 95 or above operating system.

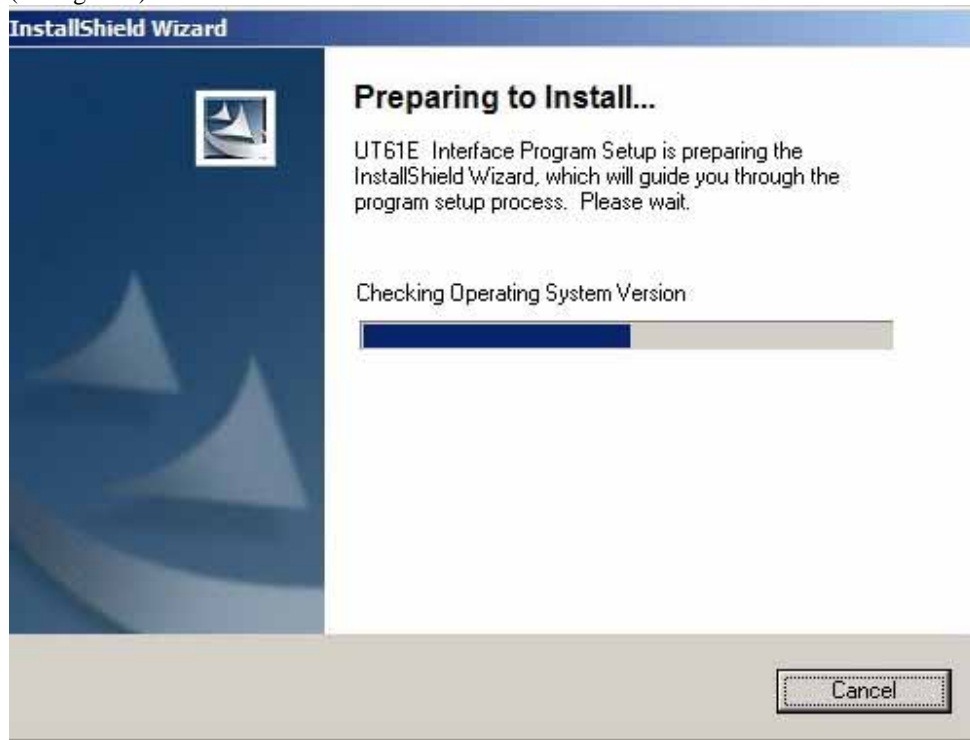
- 1.Insert the provided CD-ROM into CD-ROM drive.
- 2.Double-click the My Computer icon from the Windows desktop.(see figure 1)



(figure 1)

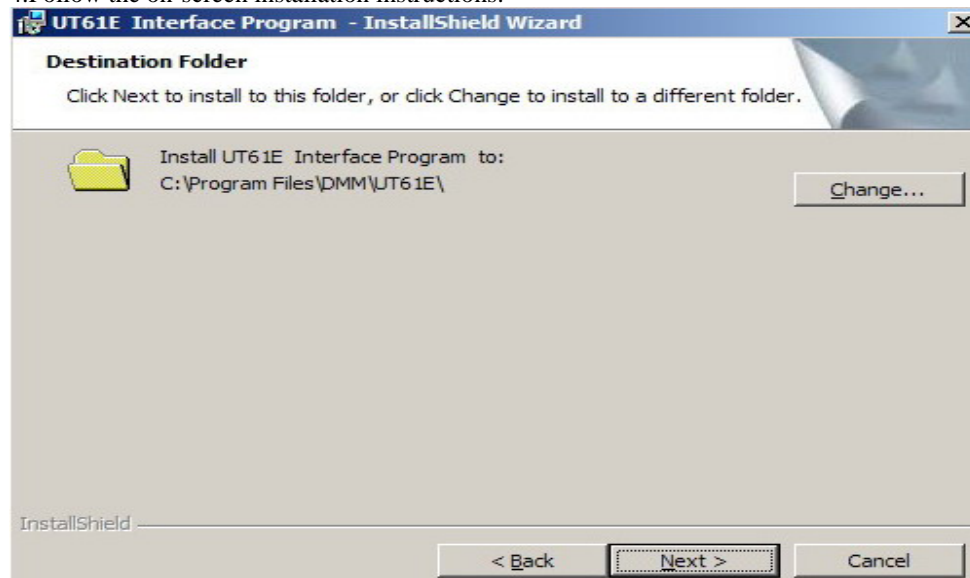
UT61E Interface Software Manual

3.click UT61E Setup to display the contents of the folder.Double-click the file Setup.Exe.
(see figure 2)



(figure 2)

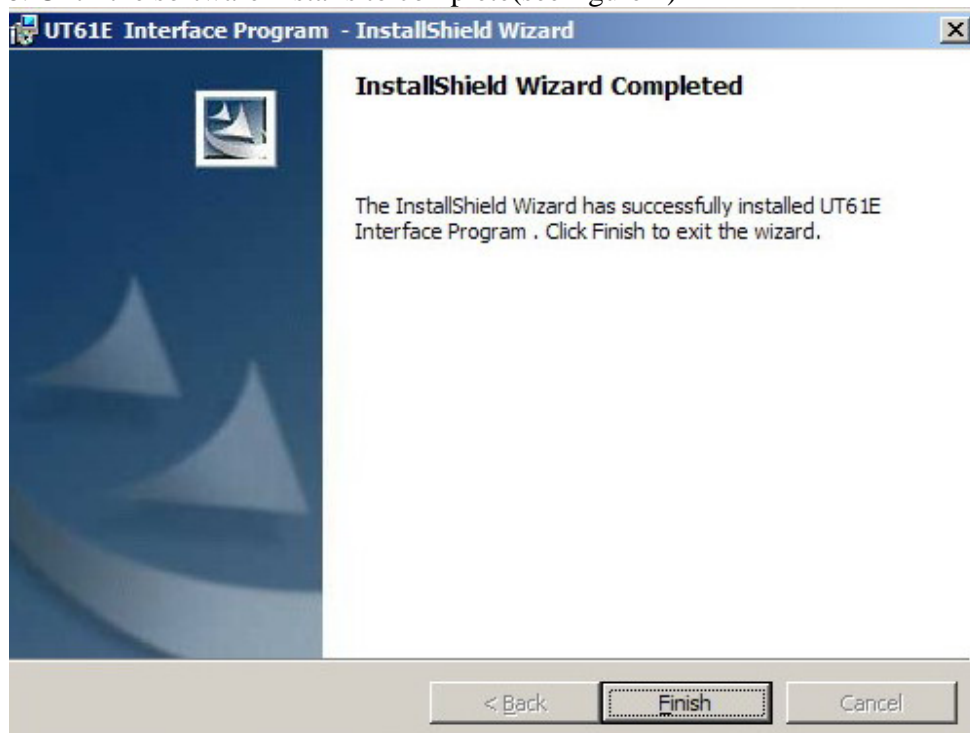
4.Follow the on-screen installation instructions.



(figure 3)

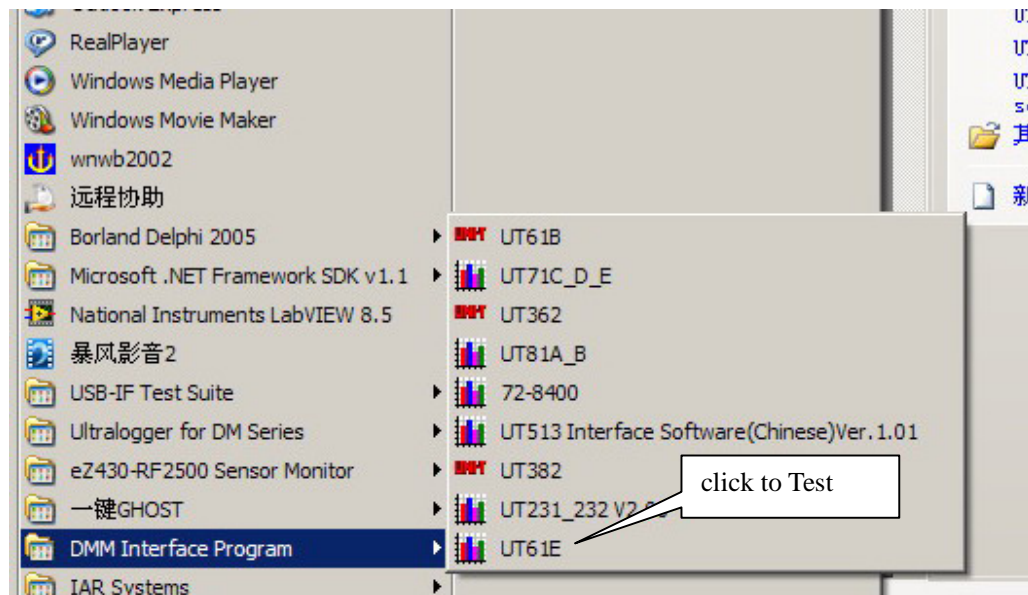
UT61E Interface Software Manual

5. Until the software installs to complete(see figure 4)



(figure 4)

6. The software installs to complete, the customer can find out" the DMM Interface Program- UT61E" in program folder ,see figure 5



(figure 5)

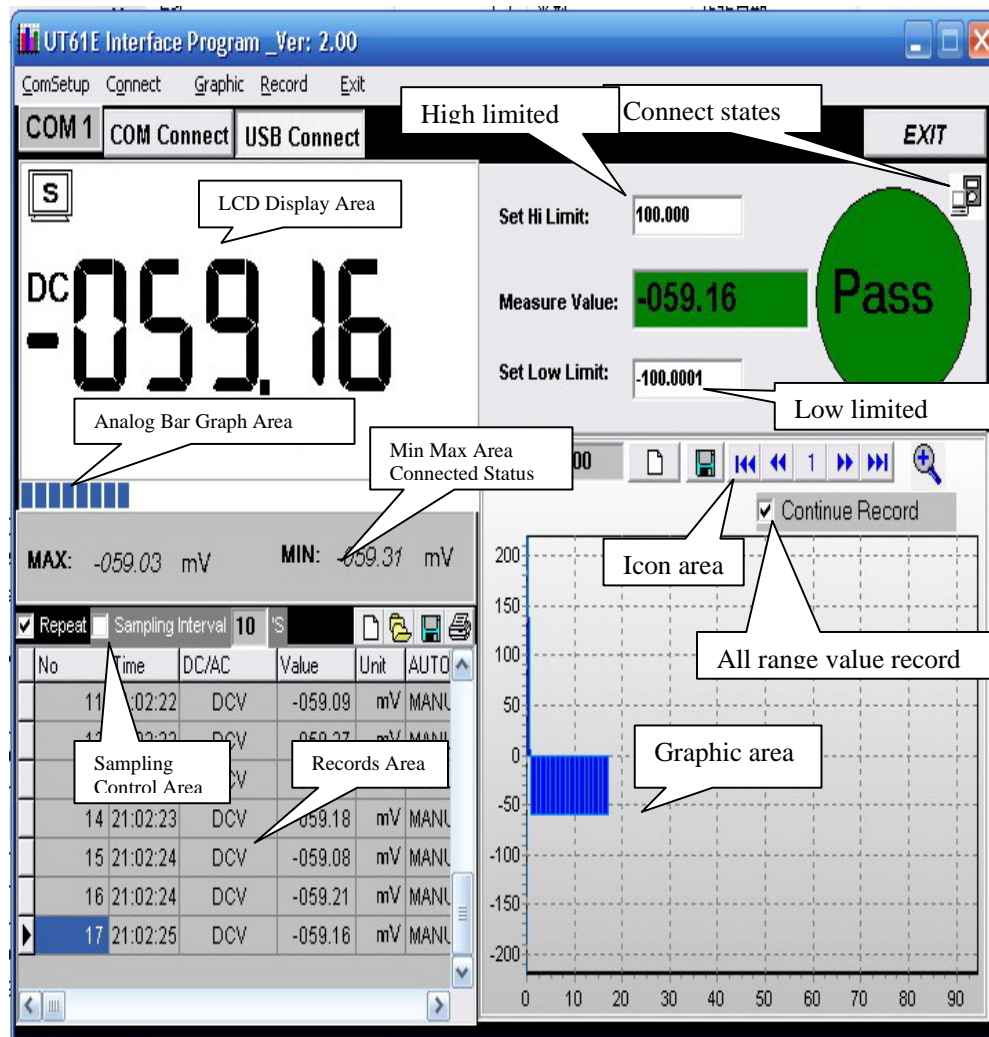
UT61E Interface Software Manual

➤ Getting Started with UT61E Interface Program

To run the **DMM Interface Program**, please do the followings:

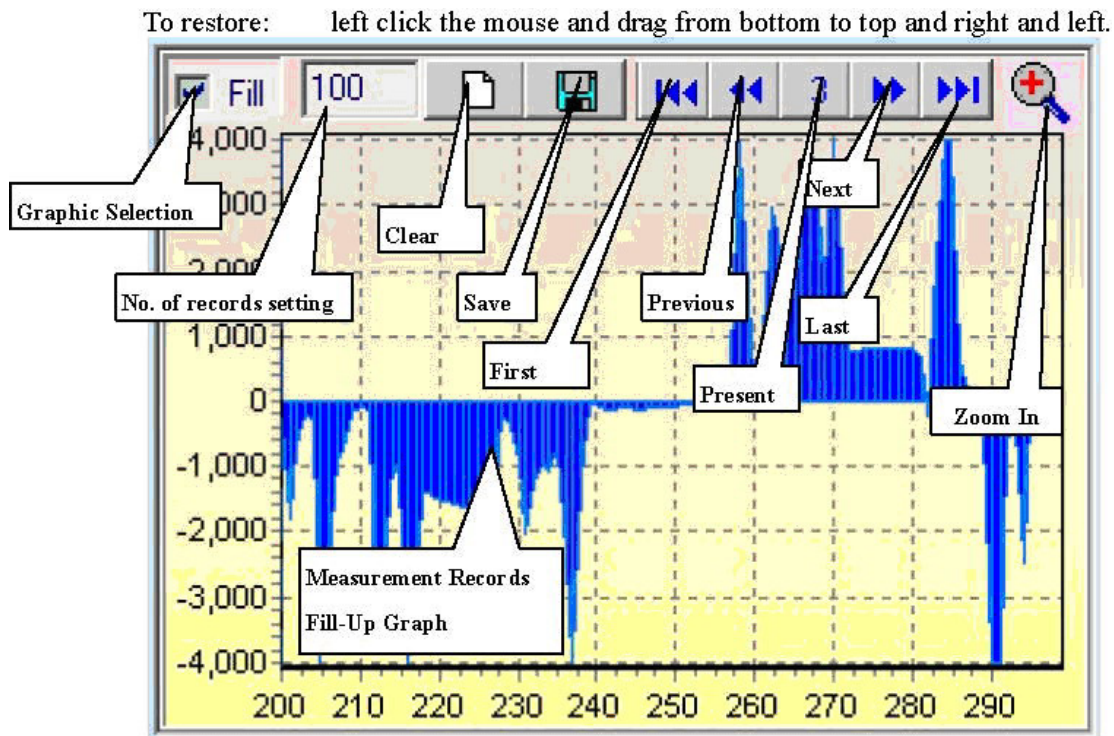
- ✚ Insert the supplied RS232C Interface Cable into the slot at the back of the meter and properly connect the other end of OR insert the supplied usb interface cable into the slot at the back of the cable to the serial port of computer.
- ✚ .From the Windows **Start** menu, choose **Programs > DMM Interface Program > UT61E**
- ✚ Press **COMSetup** to select corresponding COM 1 / 2 / 3 / 4. OR **USB** connect
- ✚ Press **Connect** from menu bar to start the connection, the icon will be displayed.

Below is the full screen of the software shown on the computer (see figure 6)



(figure 6)

➤ Graphic operation

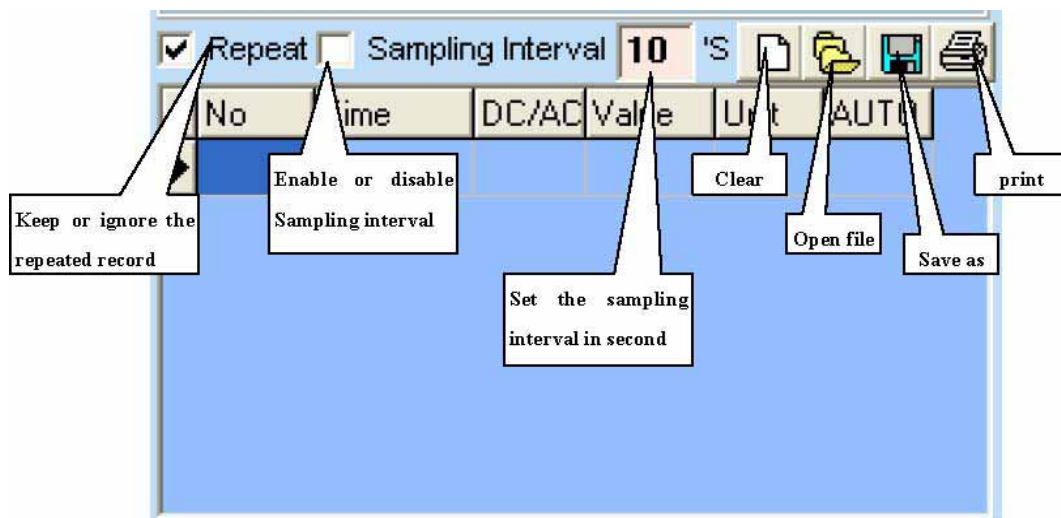


(figure 7)

During the connection, you can select the following functions by clicking the corresponding icon or the menu bar:

- ✚ **Fill:** Click the box to select “fill-up graph” or unclick to select “line graph”.
- ✚ **Record:** Setting the number of record to be shown on graphic.
- ✚ **Clear:** To clear all the current records’ graphics permanently.
- ✚ **Save:** To save current graphic into BMP format. The default file name is C:\DATA1.BMP”.
- ✚ **First:** Go to the first graphic.
- ✚ **Previous:** Go to the previous graphic.
- ✚ **Next:** Go to the next graphic.
- ✚ **Last:** Go to the last graphic.
- ✚ **Zoom In:** To enlarge part of the graphic.
To enlarge: left click the mouse and drag from top to bottom and left to right.
To restore: left click the mouse and drag from bottom to top and right and left.

➤ Data record

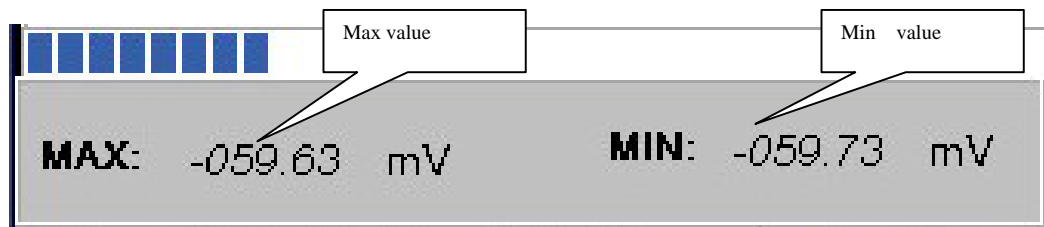


(figure 8)

During the connection, you can select the following functions by clicking the corresponding icon or the menu bar:




- ✚ **Repeat:** Click the box to keep the repeated record, or unclick the box to ignore the repeated record. The repeated records will be shown in graphic no matter what the selection is.
- ✚ **Sampling Interval:** Click to enable sampling interval function, or unclick to disable the function. Enter the sampling interval's time, the unit is second.
- ✚ **Clear:** To clear all the current records permanently.
- ✚ **Open files:** To read records from old file (*.db) .
- ✚ **Save as:** To save all the current records to file (*.txt, *.xls, *.db) .
- ✚ **print:** To print the current records.

➤ Max Min Operations (see figure 8)



(figure9)

UT61E Interface Software Manual

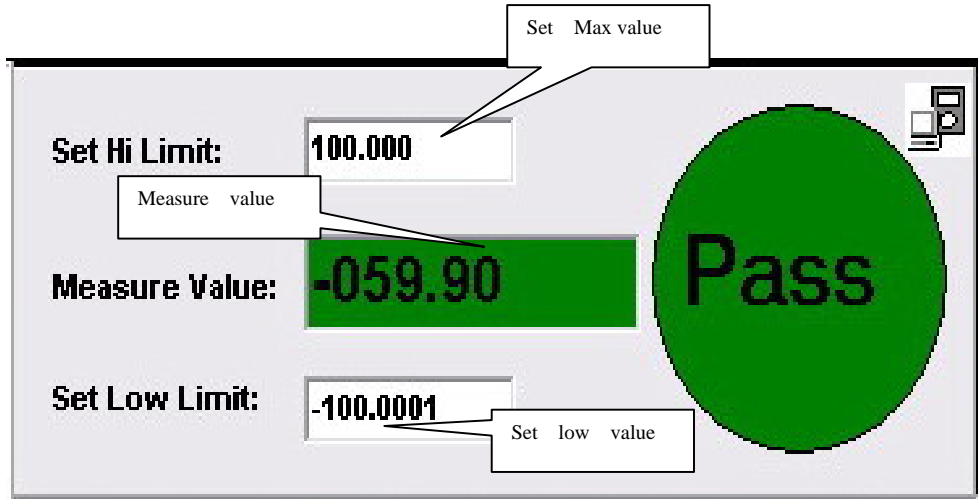
-  **MAX:** The maximum value obtained
-  **MIN:** The maximum value obtained
- 

Set max value: Click to enable the SetMax function or unclick to disable.


Enter the upper limit value in integer. It will only compare the current value obtained to the upper limit in integer, it does not identify range or function,

Set min value: Click to enable the SetMin function or unclick to disable.

Enter the lower limit value in integer. It will only compare the current value obtained to the upper limit in integer, it does not identify range or function.



(figure 10)

 : The Meter is connected properly to the computer and data is recording.

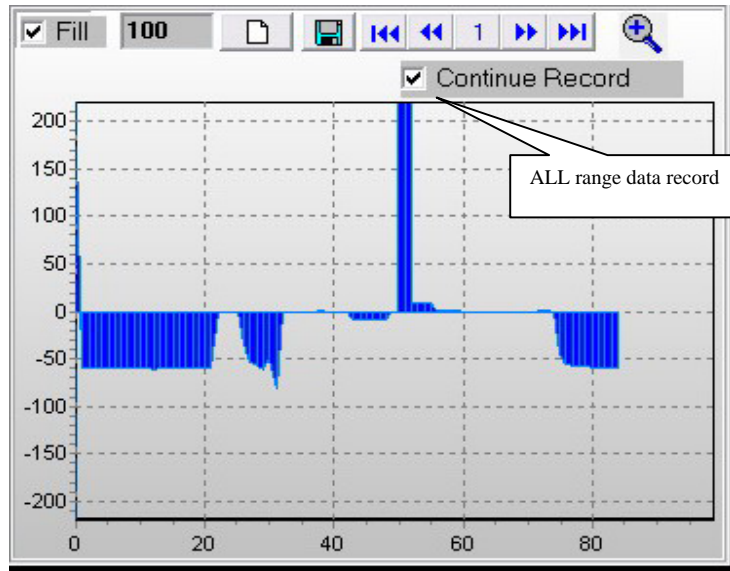
OL!! Overload, the recorded value exceeds the SetMax and SetMin value. It will be flashing and the computer will connect .

➤ Maximum Number of Records Setting

After testing, below list out a normal maximum number of records that a computer can be saved for user's reference. The computer will slow down if it exceeds the maximum.

80486 computer: 1000 to 5000 records 80586 computer: 5000 to 50000 records Pentium 2 or up: 50000 records up To set the maximum number of records from the **“Record”** of the menu bar.

➤ continue record data and draw



✚ if continue record check:

If checked, at same function data, the data that is in all files carries on the data record, for example, will put 20 range and 200 range datas of the fileses together to handle.Etc..

Remarks:

- ✚ If abnormal digits or symbols were found after installation, please remove font "UNIT-A2" and then install new font set from "FONT" directory on the provided CD-ROM.
- ✚ The software designed to display the current measured value from the Meter. When the data hold, Max or Min functions are enabled, it is normal that the Meter displayed value difference from the computer due to the Meter display has already locked.

****END****